



Lynovex® addresses the unmet challenge of infectious pulmonary exacerbations in **Cystic Fibrosis**

Cystic Fibrosis (CF)

Pulmonary exacerbations adversely impact **quality of life**, incur **significant healthcare costs**, and are associated with a more **rapid decline in lung function**^{1,2}

Modulator therapy does not prevent these events occurring even if patients experience **less frequent exacerbations**³

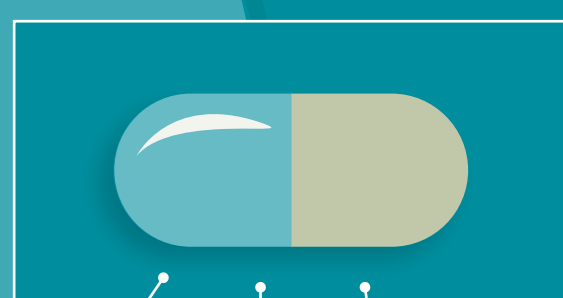
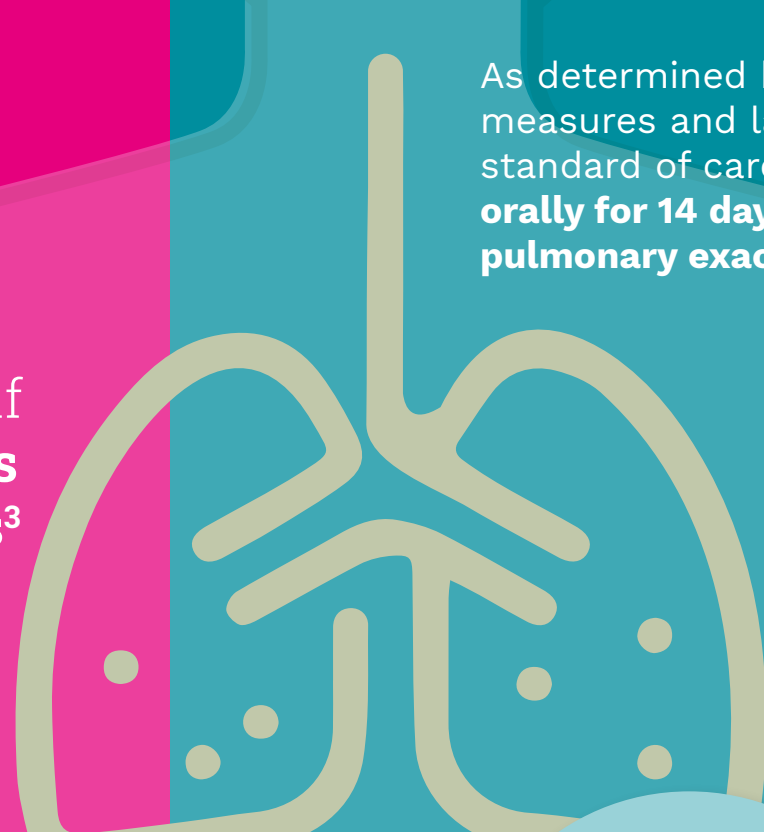
The major cause of **morbidity** and **mortality** is **progressive lung disease** due to **pulmonary infection** and **inflammation**⁵

(Lynovex®) Cysteamine bitartrate

Oral Lynovex® is the only product in development as an intervention in pulmonary exacerbations of CF

It has demonstrated significant benefit

As determined by patient reported outcome measures and laboratory tests compared to standard of care therapy (SOCT) **when taken orally for 14 days as an adjunct treatment in pulmonary exacerbations of CF**



Exhibits antimicrobial, mucolytic antibiofilm

and anti-inflammatory properties

Can be used with all CF patients because it isn't mutation-specific

Lynovex® targets the symptoms of CF and specifically those of infectious exacerbations not just the underlying regulator protein CFTR meaning

it has potential in future combination therapy and for those patients for whom modulators don't apply



Benefits of oral Lynovex® therapy are observed in patients taking modulators and those who were not

Data from this study suggests Lynovex® has the ability to:

rapidly potentiate antibiotics and resolve symptomology of exacerbations, particularly inflammation

Improved

- Scores from Cystic Fibrosis Respiratory Domain – Chronic Respiratory Infection Symptom Score (CFRSD-CRISS) and Patient Recorded Outcome Measures (PROM)
- Emotional and activity measures and vitality and health perception as measured by the Cystic Fibrosis Questionnaire (CFQR)
- And a trend to improvement in respiratory function as measured by Forced Expiratory Volume (FEV1)

Significantly reduced

- Inflammatory markers of Blood leukocyte count and Plasma C-reactive protein (CRP) levels.

Cysteamine bitartrate (Lynovex®) taken for 14 days resulted in:

These data support the reported improvement in overall well-being at day 14 in patients on Lynovex + SOCT versus those on SOCT only

For more information on **cysteamine (Lynovex®) and **cystic fibrosis** visit our website:**

novabiotics.co.uk

[Click here to see the paper](#)



NovaBiotics